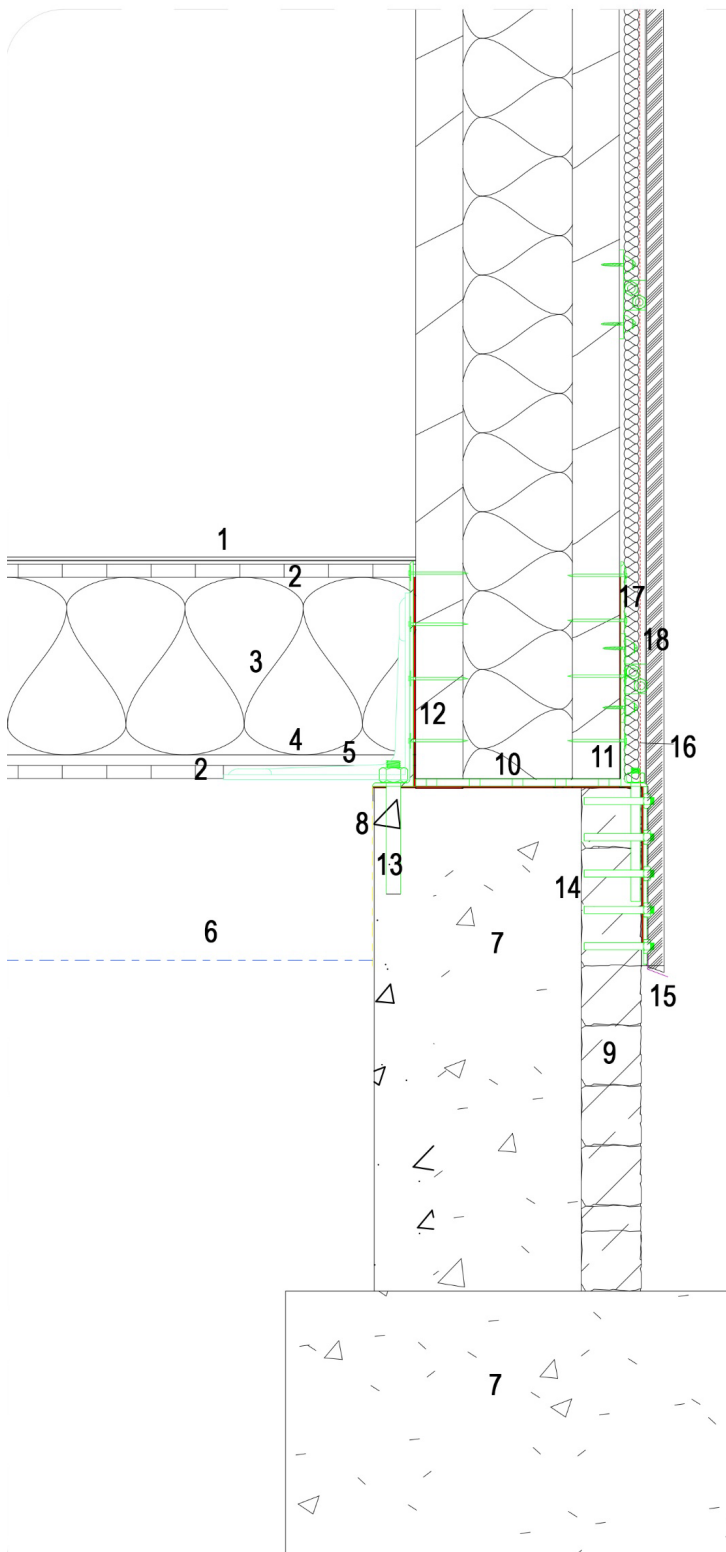


Detail – Sandwiched CLT Panels – Engineered Joist Floor and Foundation Section



1. Stone Effect Grey Engineered Stone Flooring (Tenacity Tile). PVC free and plasticizer free ceramic composite (magnesium) made to be rigid, strong, unaffected by heat and temperature variations, and sustainable. Flooring Edges -Bevelled, Flooring Fitting Type - Click Fit, Flooring Format - Tile, Flooring Surface - Stone. Colour Description - Grey, Light grey, Commercial Suitability - Class 33 Heavy Commercial, Finish -Matt, Lacquered - Non-Lacquered, Material -98% Mineral Compound, Pack Size -12, Product Type - Engineered Stone, Thermal resistance - 0.15(m2K)/W. Length - 596mm, Width - 298mm, Thickness - 7mm, Abrasion Class -AC4 -medium commercial use, Effect of Caster Chairs - Pas25,000R, Impact resistance > 1800m, Light Fastness >Grade 6, TriTec Ultimate Surface, Mould, fire & smoke resistant, Similar stability, scratch, stain resistance as a ceramic tile Backing made from recycled plastic bottles pre-attached (500 ft2 I 50 m2= 550 bottles recycled).

2. CHIP FLOORBOARD: P5 22 T&G Caberfloor - an internal high-density structural moisture resistant floor panel, 22mm. A high-density durable, tongued and grooved profile, Moisture resistant PS grade flooring. Low emission standards 'E1'. To EN13986, standard EN 312. Characteristic Strength {N/mm2}: Bending/m 10.0, Compression fc 9.8, Tension/1 6.6, Panel Shear fv 5.2, Planar shear f, 1.3, Mean Stiffness (MOE) (N/mm2) Tension E, 1800 Compression E 1800, Bending Em 3000, Panel Shear Gv 860, Characteristic Point load Fm., k (kN) (for floors and roofs) 5.4, Point load mean stiffness (N/mm) (for floors and roofs) 560, Characteristic Point load serviceability F ser,k (kN) (for floors and roofs) 4.3, Reaction to fire DFLA-S1. Moisture resistance Internal bond after boil test (%) 0.12. Sizes: 2400 x 600 x 22mm TG4, 600 centres.

3. 300mm PUR expanding foam insulation, ISOTHANE LD40, CFC & HCFC FREE, density 40 kg/m3, water and air tight, fire resistant, U-value 0.025W/mK

4. Timber I-JOISTS: European Spruce Grade 16, LVL flange and fibreboard web, to BS EN 1995-1-1, treated with organic solvent preservative to BS 5268 Pt 5 double vacuum process. Joist height h [mm] 360 Characteristic bending moment) [kNm] 31.02, Characteristic vertical shear [kN] 20.80, Bending stiffness Eljoist [N · mm2 * 109] 2,714, Shear stiffness GAjoist [MN] 5.19. All cut ends have two coats brush applied. Sizes: 90x360mm.

5. ABR100 Reinforced angle brackets, Galvanized steel S250GD + Z275 according to NF EN 10346.

6. DPC

7. Sleeper wall 455mm on foundation slab 750mm. Concrete mix - RIGACrete Watertight - water resistant concrete, minimum cement content of designed mixes shall be 220 kg/m3, strengths C40/50. Designed mixes for reinforced concrete shall comply with the requirements of BS 8500-2.

8. DPM

9. Cobble field stone layer, Thermal mass: 41.30 kJ/K, density 2300, thermal conductivity 1.8.

10. Base of CLT, treated with end grain sealant.

11. External bracket of CLT WHT 740 fixed with 4x60 Anker nails

12. Internal bracket of CLT TCN 240

13. M27 threaded rod resin fixed

14. 12x100 SKR bolt

15. Cladding Fly Mesh / Insect Mesh Fibreglass Roll PVC 18 x 16 Black 200mm 50m, overlapped with Breathing felt.

16. Breathable Roof Membrane/Breathable Roofing Felt - 1.5m x 50m (75 SQ/M) - 135 G/SM, Grade: Heavy Duty 135g/m2, Water-tightness: W1, CE approved to EN 13859

17. 25mm PermaRock EPS-Premium Insulation (EPS100) strip backing for Breathable felt.

18. Click-on battens, Blackbutt, durability Class 1 -over 40 years exterior use, BAL rating 29, fire retardant treated, Cutek CD50 Clear Oil coated for natural weathering.