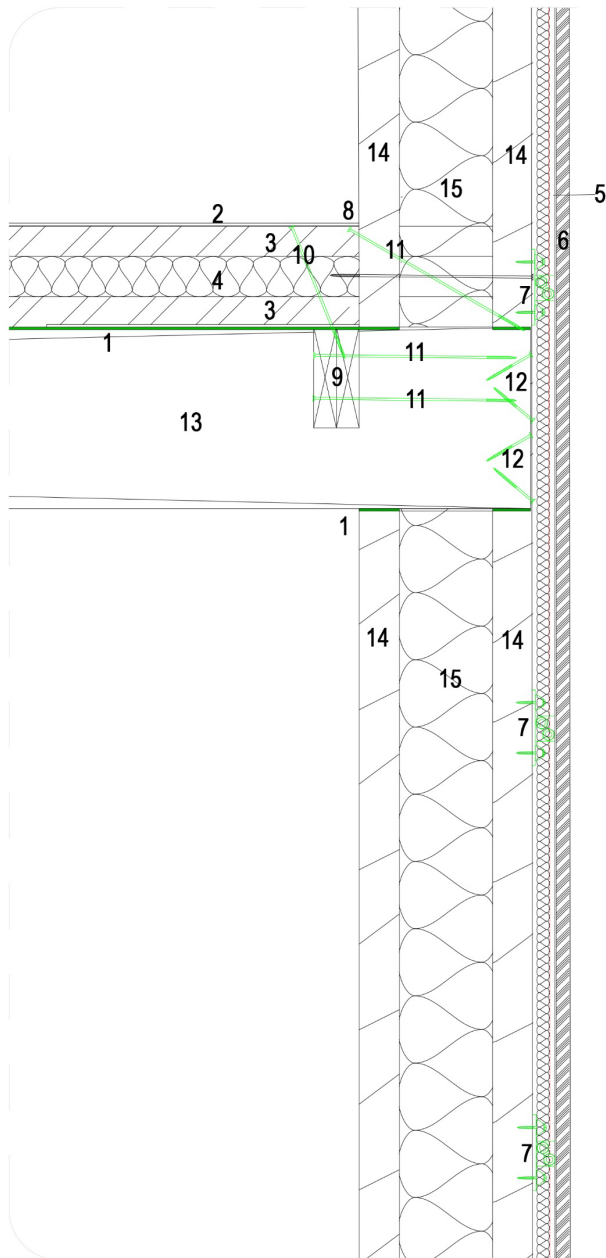


Detail – Sandwiched CLT Panels – Intermediate Floor and Beam Joint



1. Monarfloor Wall Cap 100 Timber - 3.8mm x 100mm x 8m - Bitumen composite membrane with acoustically rated fillers and a fire retardant finish
2. Stone Effect Grey Engineered Stone Flooring (Tenacity Tile). PVC free and plasticizer free ceramic composite (magnesium) made to be rigid, strong, unaffected by heat and temperature variations, and sustainable. Flooring Edges -Bevelled, Flooring Fitting Type - Click Fit, Flooring Format -Tile, Flooring Surface - Stone. Colour Description - Grey, Light grey, Commercial Suitability - Class 33 Heavy Commercial, Finish - Matt, Lacquered - Non-Lacquered, Material - 98% Mineral Compound, Pack Size -12, Product Type - Engineered Stone, Thermal resistance - 0.15(m2K)/W. Length - 596mm, Width - 298mm, Thickness - 7mm, Abrasion Class - AC4 - medium commercial use, Effect of Caster Chairs - Pas25,000R, Impact resistance >1800m, Light Fastness >Grade 6, TriTec Ultimate Surface, Mould, fire & smoke resistant, Similar stability, scratch, stain resistance as a ceramic tile Backing made from recycled plastic bottles pre-attached (500 ft2 / 50 m2= 550 bottles recycled).
3. 60mm MM cross-laminated timber panels, spruce, European Technical Approval ETA-09/0036, improved fire rating - water based fire retardant treated, off-site pre-assembled and pre-insulated 4 sandwich panels per roof/floor. thermal conductivity: 0.13 W /mK, density: 480-500 kg/m3, Compressive strength: 2.5 N/mm2 (perpen. to grain of boards) 21 N/mm2 (parallel to grain of boards), Bending strength: 24 N/mm2 (parallel to grain of boards), Elastic modulus: 370 N/mm2 (perpen. to grain of boards) 11,500 N/mm2 (parallel to grain of boards) I
4. 80mm PUR expanding foam insulation, ISOTHANE LD40, CFC & HCFC FREE, density 40 kg/m3, water and air tight, fire resistant, U-value 0.025W/mK
5. Breathable Roof Membrane/Breathable Roofing Felt - 1.5m x 50m (75 SQ/M) - 135 G/SM, Grade: Heavy Duty 135g/m2, Water-tightness: W1, CE approved to EN 13859
6. Click-on battens, Blackbutt, durability Class 1 -over 40 years exterior use, BAL rating 29, fire retardant treated, Cutek CD50 Clear Oil coated for natural weathering.
7. Click-on battens brackets, on CLT surface mounted.
8. Full-surface self-adhesive Hanno Flashing Tape DUO Easy 180 is a full-surface adhesive flashing tape for interior and exterior seals, consisting of a modified polyamide-film/woven material combination. It is equipped with a full-surface self-adhesive side for connecting to windows and masonry as a standard feature. The cover film is cut in the longitudinal direction. Durability: optimal moisture management in the joint: sd value 0.6 :5 sd :5 23 m, Resistance to driving rain >600 Pa, Airtight to around :5 0.1 m3/(h·m ·(daPa)2/3), No additional film adhesive required, All bonded layers covered with longitudinally cut film, Stretchy and simple to work with, Can be plastered or painted over, UV-resistant for 12 months.
9. Roof/Floor to wall support, C16 timbers, 2 x 45x200
10. HBS 8x320 screws
11. HBS 6x340 at 300 alternating centres screws.
12. VGZ 9x200 screws.
13. Glulam beam, Stress Grade: GL32 c (BS16) with combined layup, 240x360mm
14. 80mm MM cross-laminated timber panels.
15. 200mm PUR expanding foam insulation