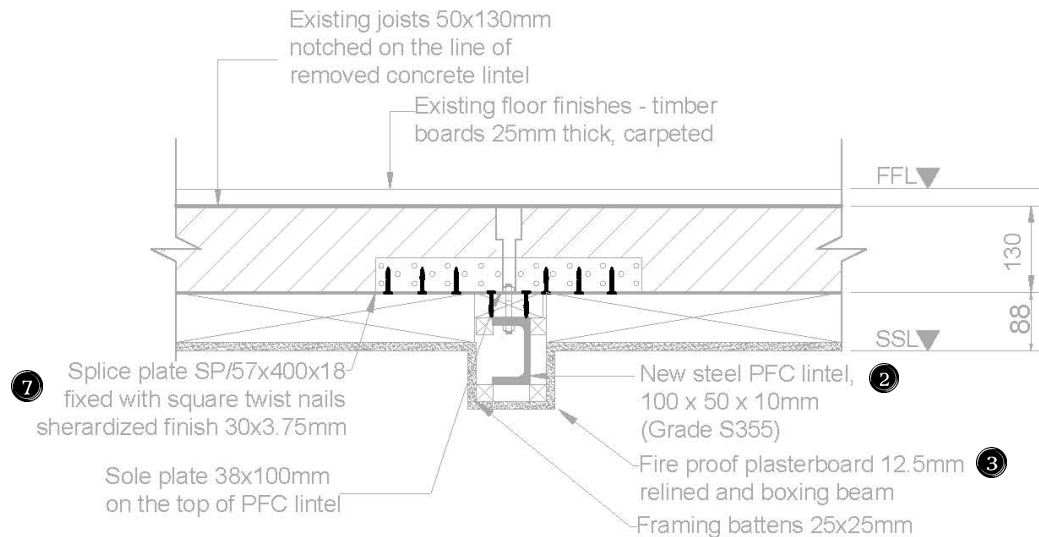


Typical Detail – Flange Channel Lintel – Top Fixing



NOTES:

1. 2 No 45x200mm C24 timber beam, length 2280mm, both ends cast into mortar coated with bitumen paint. Coated with anti-corrosion metal paint. Manufacturer: Contractor's choice.
2. Parallel Flange Channel sized 100x50x10, length 1230mm, thickness of web t 5mm, Thickness of flange T 8.5mm, S355 Steel grade. Coated with anti-corrosion metal paint. Manufacturer: Contractor's choice.
3. Fire Resistant, Vapor Control Plasterboard (Gyproc), Manufacturer: Contractor choice, Type/Standard: Fire retardant (30min) WallBoard in tapered edge with integrated vapor control layer, to EN 13950, Unit sizes: 12.5 mm thick, 1200 x 2400 mm, Durability: fire, vapor control. Manufacturer: British Gypsum.
4. Dry Pack C Portland Cement based powder packing mix to EN 12390 for bedding in horizontal and vertical gaps of 5mm-100mm, 25kg bags. The water requirement to produce the mortar is: 2.0 to 2.5 litres of water per 25kg bag. Density 2240 kg/m³, Compressive strength 28 days: 48N/mm². Manufacturer: Contractor's choice.
5. Concrete Padstone PAD 01 215mm x 140mm x 102mm, to BS 8110, concrete comprehensive strength C16/18, Manufacturer: Supreme Concrete.
6. Framing Anchors - Manufacturer: Contractor choice, Type/Standard: Cullen FAS anchors, FA2 of 1.2mm thick galvanised steel to BS EN 10346:2009 G275, Unit sizes: Dimensions and drill holes [mm] 125 x 42mm, 1.2mm thick, holes diameter Ø4.0, Durability: Pre-galvanized mild steel.
7. Splice plate - Manufacturer: Contractor choice, Type/Standard: Splice plate, to BS EN 845-1, Unit sizes: Dimensions and drill holes [mm] 400 x 57x18 mm, 1.2mm thick, holes diameter Ø4.0, Durability: Pre-galvanized mild steel.
8. Fixing - Hex Head Bolts DIN 931 (ISO 4014) M12 in Bright Zinc Plated (BZP) Class 8 high tensile steel, N3.75 30mm square twist nails, CE marked to EN14592 with Square twist profile and Sheradised coating, wood screws, dry partition screws.