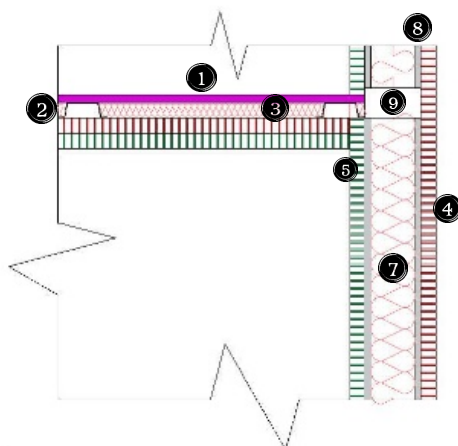


Typical Detail – Light Steel Framing – Partition Walls and Ceilings



Notes:

1. Weather Defence sarking boards, Sheathing board(s) layer 1 x 12.5mm, Sizes: Width: 1200mm, Length: 2400mm
2. Light steel nonloadbearing Ceiling Channel: length (mm) 3600, gauge (mm) 0.5, 81x52x25mm deep fixed into Perimeter Channel: length (mm) 3600, gauge (mm) 0.5, top flange x deep x bottom flange 19x26x28mm
3. Thermawall TW55 PIR Insulation Board, Thickness: 25mm, Width: 1200mm, Length: 2400mm,
4. Ceiling 1 x 15mm GTEC Megadeco dense plasterboard with superior fire resistance, sound insulation and impact resistance.
5. Ceiling 1 x 15mm GTEC MegadecoVBoard vapour control plasterboard
6. Wall 1 x 15mm GTEC MegadecoVBoard vapour control plasterboard
7. Earthwool® OmniFit Slab - Multi-purpose, non-combustible, glass mineral wool slab for installation by friction fitting. Thickness 70mm.
8. Light steel nonloadbearing C Studs: base (mm) 92, length (mm) 2400, 2700, 3000, gauge (mm) 1.2, for internal ceiling partitions application.
9. Light steel nonloadbearing U track: base (mm) 94, length (mm) 3000, 3600, gauge (mm) 1.2, 50mm deep.
10. Wall 1 x 15mm GTEC Megadeco dense plasterboard with superior fire resistance, sound insulation and impact resistance.
11. Light steel nonloadbearing C Studs: base (mm) 92, length (mm) 2400, 2700, 3000, gauge (mm) 1.2 and I studs: base (mm) 92, length (mm) 2400, 2700, 3000, gauge (mm) 1.2, internal walls application.