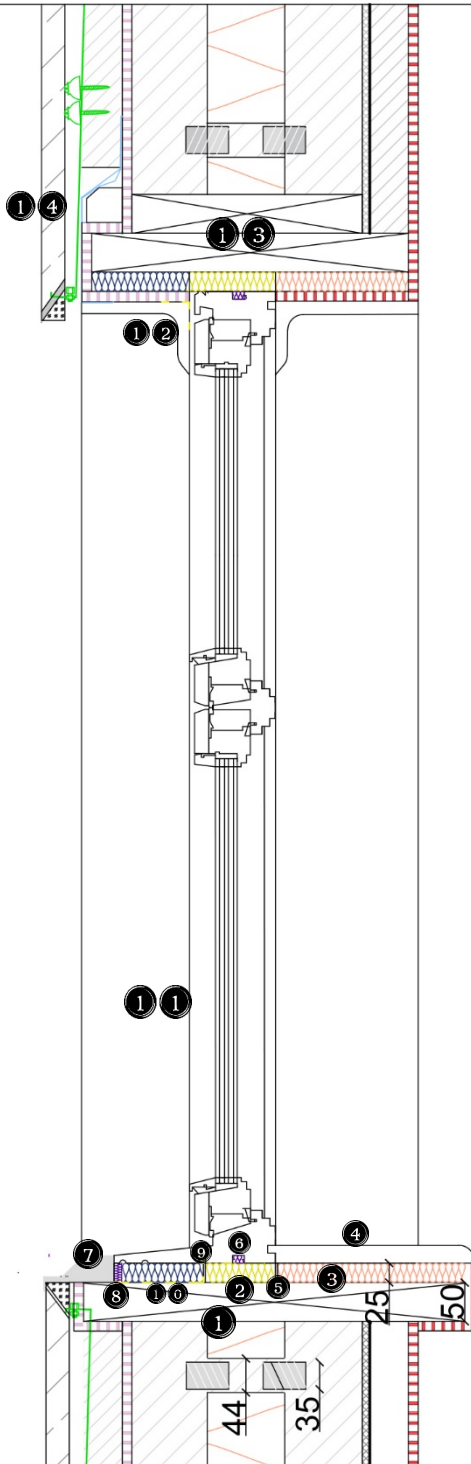


Typical Detail – Passive Twin Stud Wall – Window Fixing



NOTES:

1. Timber sill, British red cedar 50x490mm, grade C18 specified in BS EN 1995-1-1:2004+A2:2014, fresh sawn, moderately durable. Thermal Conductivity: The R value (the reciprocal of k) for Western Red Cedar is 1.35" (34mm) of thickness. Fire rating: 45 (Class B rating). Durability: 3 - Moderately durable. Species group: Softwoods, Colour description: Reddish brown, Mean density: 885 Kg/m³ (wet) - 540 Kg/m³ (kiln dried). Manufacturer: Stewart Milne Group.
2. Window insulation and fixture frame round layer 25mm - polyurethane foam spray: Type/Standard: Soudal Flexible Expanding Foam Gun Grade 750 ml, high thermal and acoustic insulation values. CFC free, with high bond strength and low expansion. Excellent yield and adhesion on most substrates. Suitable for both indoor and outdoor use. Manufacturer: Soudal Inc.
3. 25mm insulation layer under internal ledge: EcoTherm Eco-Cavity Wall Insulation boards 450mm x 1200mm, fibre free rigid polyisocyanurate (PIR) insulation core faced with aluminium foil composite on both sides, to BS EN 826:1996 Manufacturer: EcoTherm Insulation Ltd
4. Internal timber window ledge 25mm (Part of the window frame). Manufacturer: JELD-WEN UK LTD.
5. Internal window frame silicone sealant: DOWSIL™ 796 PVC-U, Aluminium and Wood Silicone Sealant is a one-part, low modulus, neutral curing silicone sealant specifically developed for the sealing of PVC-U, glass, glazed surfaces and brickwork. It is very popular for perimeter sealing applications of windows and doors. Unit sizes: 380 ml tube. Durability: Good unprimed adhesion to a variety of substrates. Low modulus, high elasticity. 100% silicone polymer. Neutral cure. Low odour. Conforms to ISO 11600-F&G-25LML. Resistant to ozone, ultra-violet radiation and temperature extremes. Manufacturer: Dow Silicones Belgium SPRL
6. Acoustic foam layer around window frame fitted into frame void 10mm strip (Part of the window frame). Manufacturer: JELD-WEN UK LTD.
7. Coated drip edge flashing - galvanized steel 0.7mm gauge flashing folded to the internal and external angles and both sides, Standard zinc coating (g/m²) 275 (Z275) and coated BSC Colorcoat HP 200 plastisol - Anthracite RAL 7016. Nominal organic coating thickness (µm) 25 to EN13523, to BS EN 10346:2009, to provide an effective water run-off course for rainwater. Unit sizes: 3m lengths with 200mm x 200mm wings. Accessories: Silicone sealant DOWSIL™ 791, Fasteners: carbide dies fixing screw point with a rubber washer with a coloured cap matching sheets colour. Type 2, size 5.5 x 25/28/38/50/55/65/80 mm, drilling capacity 3.5mm, bi-hex head. Manufacturer: Phoenix Steels.
8. 8mm PermaRock EPS-Premium Insulation (EPS100) strip sealed at the back of coated drip edge flashing.
9. External window frame movement joint, weatherproof sealant layer 3mm. Type/Standard: DOWSIL™ 791 Weatherproofing Silicone Sealant is a specified, premium performance weather sealing product specifically designed for general glazing and weathersealing in curtain wall and building facades, Unit sizes: 380 ml tube. Durability: Durometer hardness, Shore A: 34 points. Joint movement capability: ±50%. Tensile adhesion strength (at 25/ 50% extension): 0.276/ 0.414 MPa. Manufacturer: Dow Silicones Belgium SPRL
10. Full-surface self-adhesive Hanno Flashing Tape DUO Easy 180 is a full-surface adhesive flashing tape for interior and exterior seals, consisting of a modified polyamide-film/woven material combination. It is equipped with a full-surface self-adhesive side for connecting to windows and masonry as a standard feature. The cover film is cut in the longitudinal direction. Durability: optimal moisture management in the joint: sd value 0.6 ≤ sd ≤ 23 m, Resistance to driving rain >600 Pa. Airtight to around ≤ 0.1 m³/(h·m (daPa)^{2/3}). No additional film adhesive required. All bonded layers covered with longitudinally cut film, Stretchy and simple to work with. Can be plastered or painted over, UV-resistant for 12 months. Manufacturer: Hanno Werk GmbH & Co. KG (available from B&Q)
11. Stormsure Energys casement-transom/landscape with trickle vents softwood timber triple glazed with warm edge spacer windows A+ rated, 18mmx55mm glazing rebates for 36mm insulating glass units, acoustic performance RW (C, Ctr) 36 (-2, -4) dB, fixed to the wall blocks with hangers and screws. Expansion gap 25mm around frame. Manufacturer: JELD-WEN UK LTD.
12. Timber architrave, decorative white. (Part of the window frame). Manufacturer: JELD-WEN UK LTD.
13. Timber lintel, British red cedar 50x300mm and 50x400mm, grade C18 specified in BS EN 1995-1-1:2004+A2:2014, fresh sawn, moderately durable. Thermal Conductivity: The R value (the reciprocal of k) for Western Red Cedar is 1.35" (34mm) of thickness. Fire rating: 45 (Class B rating). Durability: 3 - Moderately durable. Species group: Softwoods, Colour description: Reddish brown, Mean density: 885 Kg/m³ (wet) - 540 Kg/m³ (kiln dried). Manufacturer: Stewart Milne Group.
14. ARC Rainscreen Barrier provide a two-hour fire rating where continuous vertical airflow is required behind a rainscreen cladding system, Material: Rock fibre mineral wool. Fire rating (to BS EN 13501-1): Euroclass A1. Thermal conductivity: 0.035 W/m·K. Up to two hours' fire integrity. Provides a 25 mm airspace behind rainscreen cladding. Foil-faced to provide a smoke barrier. Suitable for horizontal applications. Available to suit cavity widths from 75–300 mm. BRE Green Guide 'A+' rating. Manufactured under ISO 9001- and ISO 14001-certified 'Quality and Environmental Systems'. Manufacturer: ARC Building Solutions Limited.