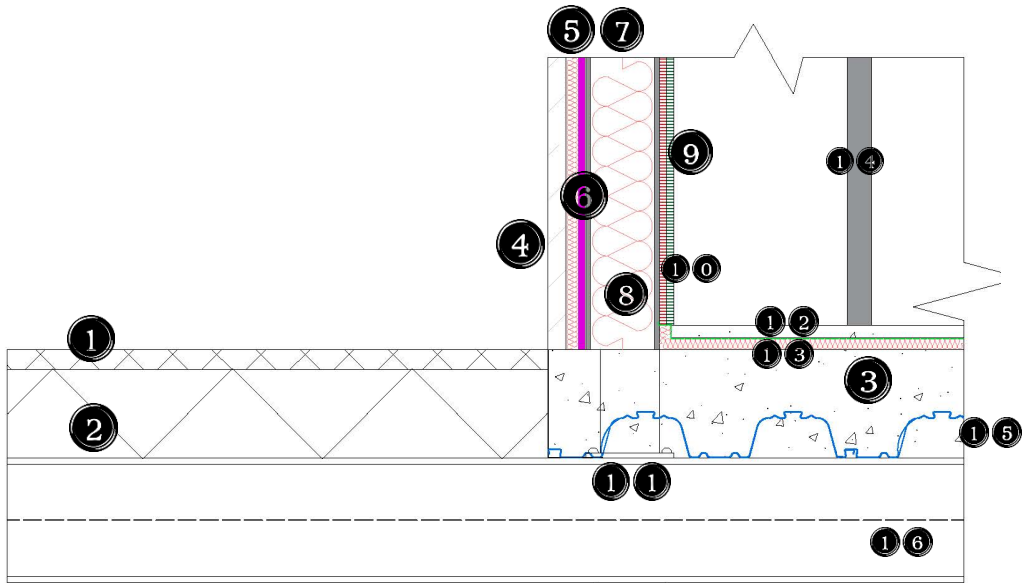


# Typical Detail – Shallow Concrete Steel Floor – Pad Foundations



## Notes:

1. Decking mesh: mild steel S275 JR, galvanised SC Open Steel Flooring W100 25 x 3mm 40 x 100 1 x 1m panels, depth 40mm.
2. Parallel lattice beams: Chord details 75x155 mm MG45 height/overall depth 450mm, node centres 600mm.
3. Concrete slab: filling with concrete mix - RIGAcrete Durable, outstanding high performance concrete with silica fume, high strength, low permeability, abrasion resistant, concrete strength >80N/mm<sup>2</sup>, depth 320mm.
4. External wall cladding: horizontal Siberian Larch timber boarded sides 145mm width up to 6000mm long, profile - open rainscreen with Secret-fix solution, 37mm deep.
5. Thermawall TW55 PIR Insulation Board, Thickness: 25mm, Width: 1200mm, Length: 2400mm,
6. Wall External Weather Defence sarking boards, Sheathing board(s) layer 1 x 12.5mm, Sizes: Width: 1200mm, Length: 2400mm
7. Loadbearing wall C stud C.150.50.12 depth (Dmm) 150, flange (Wmm) 50, return (Rmm) 10, gauge (Tmm) 1.2, weight (kg/m) 2.49.
8. Earthwool® OmniFit Stud - Multi-purpose, non-combustible, glass mineral wool roll for installation by friction fitting. Thickness 130mm.
9. 1 x 15mm GTEC Megadeco® Board vapour control plasterboard
10. 1 x 15mm GTEC Megadeco dense plasterboard with superior fire resistance, sound insulation and impact resistance.
11. Hollow cold formed square supportive posts 120x120 Designation thickness t 10mm, ASTM A36
12. Concrete slab: 25mm, filling with concrete mix - RIGAcrete High Flow, highly fluid concrete, concrete strength C16/20.
13. Earthwool® Acoustic Floor Slab 25mm resilient layer beneath floor screed. The resilient layer turned up at the edges of the floor to isolate the walls from the screed.
14. Loadbearing wall C stud C.150.50.12 depth (Dmm) 150, flange (Wmm) 50, return (Rmm) 10, gauge (Tmm) 1.2, weight (kg/m) 2.49.
15. Composite structure decking panels: 24 trapezoidal panels 80mm deep, 7m long spanned 600mm apart; steel grade S320, zinc coated, 1.2 mm thick.
16. Universal beams sized 254x146x43, 4 x length 15000mm, 5 x length 8000mm, thickness of web t 7.2mm, Thickness of flange T 12.7mm, S355 Steel grade. Thermally coated with zinc-aluminium alloys. Fire exposed sides coated with fire resistant vermiculite spray.
17. Universal posts sized 254x254x167, length 380mm, thickness of web t 19.2mm, Thickness of flange T 31.7mm, S355 Steel grade, Thermally coated with zinc-aluminium alloys. Fire exposed sides coated with fire resistant vermiculite spray.
18. Single base plate thickness tp > 6 in (10mm), material ASTM A36 welded to both ends of the column and attached to the foundation with four holding down anchor rods: material ASTM A36
19. Pad foundation above ground level 48mm and sloped for first row along water level 132-158mm with square steel brackets fitting the size of pad. Reinforcement with ribbed steel mesh. Filling with concrete mix - RIGAcrete Watertight - water resistant concrete, strengths C40/50.

