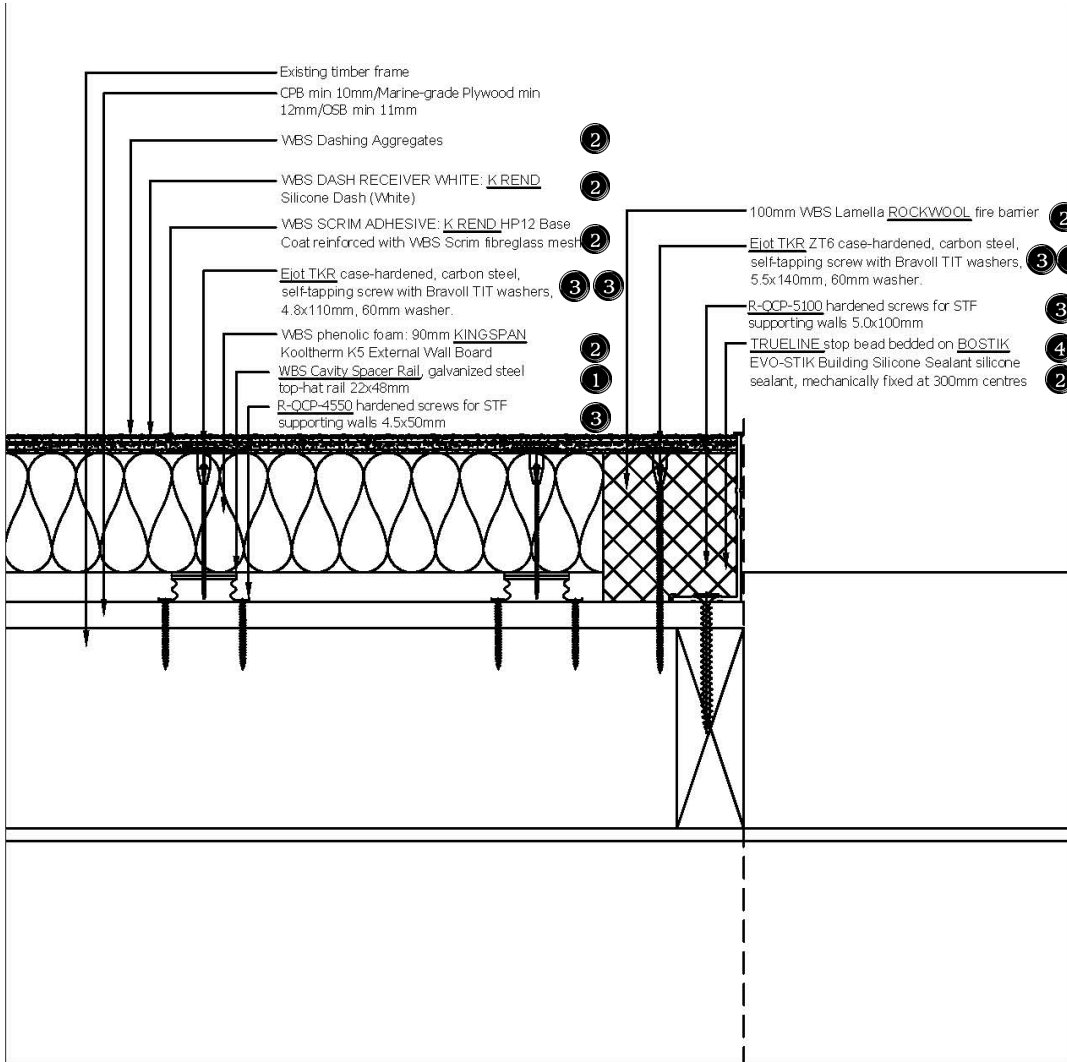


Typical Detail – Timber Frame Wall External Insulation – Wall End/Party Wall Fixing



NOTES:

1. WETHERBY RajRail KIWA system.
 - WBS Cavity Spacer Rail, galvanized steel top-hat rail track 22x48mm, slotted and sideways perforated profile, screw fixed through sheathing board into existing timber studs to create cavity behind the insulation boards. Vertical rails should be fixed at maximum 150 mm or 300 mm centres, additional spacer support rails shall be installed around openings. Fire performance: European class B-s1, d0, in accordance with BS EN 13501-1, dynamic wind uplift up to 3 kN/m², Compressive stress at 10 % deformation at 70 kPa.
 2. WETHERBY WBS Epsilon Insulation system as per specification.
 - Insulation Bedding Adhesive.
 - WBS phenolic foam: KINGSPAN Kooltherm K5 External Wall Board.
 - WBS sealing tape: VIta Cellular Foams VITASEAL Foam VSR600 3-7.
 - WBS Lamella ROCKWOOL fire barrier (façade)
 - WBS Scrim fibreglass mesh: ADFORDS reinforcing fabric
 - WBS SCRIM ADHESIVE: K.REND HP12 Base Coat
 - WBS DASH RECEIVER WHITE: K.REND Silicone Dash (White)
 - WBS Dashing Aggregates: DERBYSHIRE AGGREGATES.
 - SEALANT: BOSTIK EVO-STIK Building Silicone Sealant
 3. Proprietary system fixings:
 - Rawlplug R-OCP-4550 hardened screws for STF supporting walls 4.5x50mm. Threaded OSB/Chipboard screw with optimised head geometry with underhead cutting ribs and double cone head. Recess PZ2, Min. installation depth 18mm, Min. substrate thickness 36mm, Min. spacing 30mm, Min. edge distance 30mm.
 - Rawlplug R-OCP-5100 hardened screws for STF supporting walls 5.0x100mm. Threaded OSB/Chipboard screw with optimised head geometry with underhead cutting ribs and double cone head. Recess PZ2, Min. installation depth 20mm, Min. substrate thickness 40mm, Min. spacing 30mm, Min. edge distance 30mm.
 - EJOt TKR case-hardened, carbon steel, self-tapping screw with Bravoll TIT washers, 4.8x110mm, 60mm washer/anchor. Anchor: BRAVOLL TIT 60/5-20, Washer diameter: 60 mm, Minimum embedment nom: 20 - 40 mm, Anchor body material: shock-resistant polypropylene, Approval: 090-006720 TZUS Czech Republic. Screw material: Case-hardened steel, Climadur-coated – high-quality coating to improve corrosion protection (15 Kesternich cycles, DIN 50018, 1997), bugle head. Diameter: 4.8 mm, Drilling capacity: 1.5 mm, Drive: Cross recess PH 2. Pre-assembled screw, high load-bearing capacities. Minimum spacing: 100mm, Minimum edge distance: 100mm.
 - EJOt TKR ZT6 case-hardened, carbon steel, self-tapping screw with Bravoll TIT washers, 5.5x140mm, 60mm washer. Anchor: BRAVOLL TIT 60/5-20, Washer diameter: 60 mm, Minimum embedment nom: 20 - 40 mm, Anchor body material: shock-resistant polypropylene, Approval: 090-006720 TZUS Czech Republic. Screw material: Case-hardened steel, Climadur-coated – high-quality coating to improve corrosion protection (15 Kesternich cycles, DIN 50018, 1997), bugle head. Diameter: 5.5 mm, Drilling capacity: 6 mm, Drive: Hexabulbar drive T30. Pre-assembled screw, high load-bearing capacities. Minimum spacing: 100mm, Minimum edge distance: 100mm.
 - Fix insulation boards as per Manufacturer's recommendation. Fit tightly board edges together.
 4. TRIMS, BEADS as per specification
 - TRUELINE metal stop beads.
 - TRUELINE Bellcast drip beads.
 - TRUELINE Movement beads.
 - TRUELINE base beads.
 - TRUELINE stop beads
 - TRUELINE Corner beads
 - TRUELINE Oversits
 - TRUELINE Trims & flashings
 - Fix beads and trims at all joints, junctions and perimeters, straight and with a constant projection.
 5. Refix retained services and fittings as per drawings and specification, use EWI proprietary fixing
- SWIFIX SWI-ST tubespacer
- SWIFIX SWI-TT tap fixing tube with expanded collar
- SWIFIX SWI dish pad mounting plate with 4 point fixing sleeves EJOt TORX T40 FID