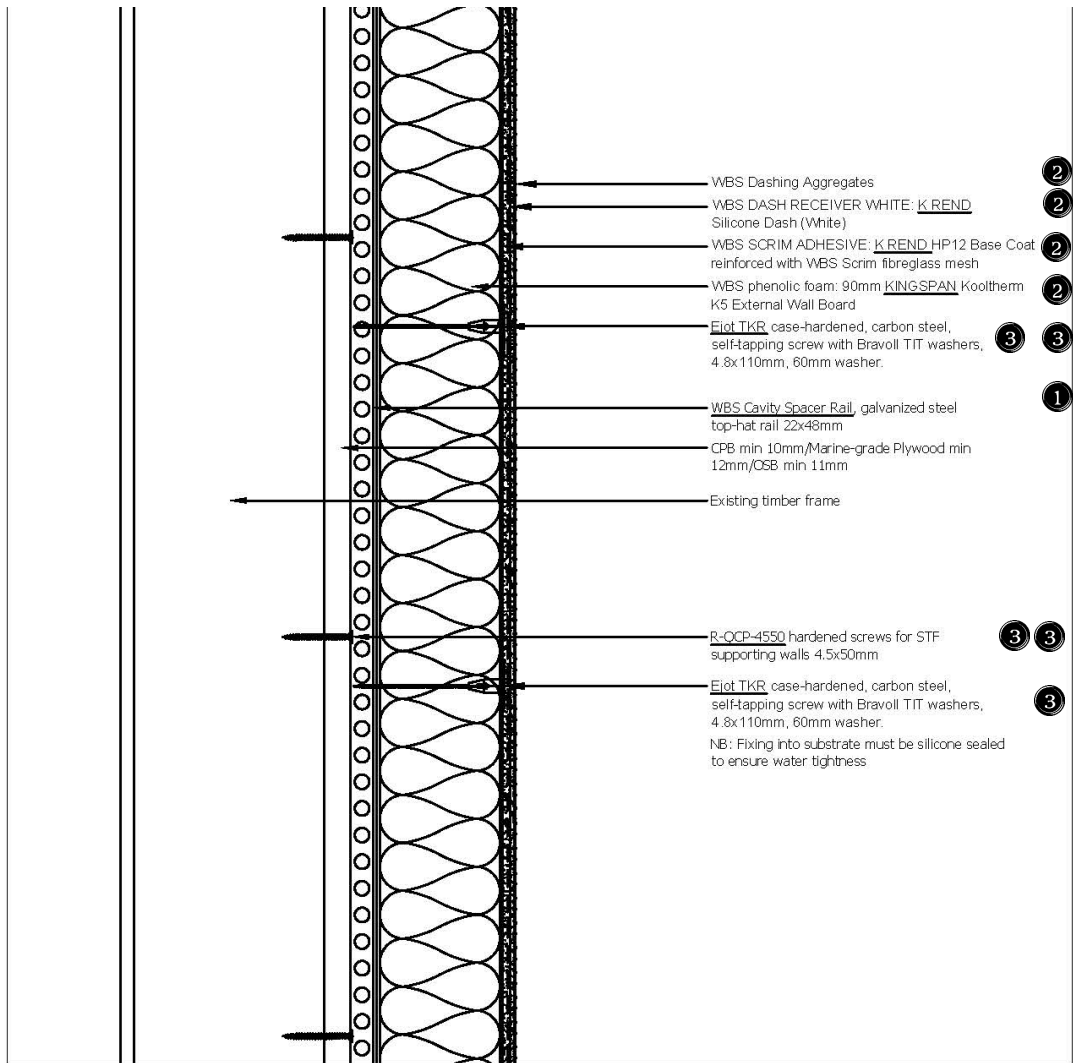


Typical Detail – Timber Frame Wall External Insulation – Wall Fixing



NOTES:

1 WETHERBY RagRail KWIA system.

- WBS Cavity Spacer Rail, galvanized steel top-hat rail track 22x48mm, slotted and sideways perforated profile, screw fixed through sheathing board into existing timber studs to create cavity behind the insulation boards. Vertical rails should be fixed at maximum 150 mm or 300 mm centres, additional spacer support rails shall be installed around openings. Fire performance European class B-s1, d0, in accordance with BS EN 13501-1, dynamic wind uplift up to 3 kN/m², Compressive stress at 10 % deformation at 70 kPa.

2 WETHERBY WBS Epsilon insulation system as per specification.

- Insulation Bedding Adhesive.
- WBS phenolic foam: **KINGSPAN** Kooltherm K5 External Wall Board.
- WBS sealing tape: Vita Cellular Foams VITASEAL Foam VSR600 3-7.
- WBS Lamella **ROCKWOOL** fire barrier (façade)
- WBS Scrim fibreglass mesh: **ADFORDS** reinforcing fabric
- WBS SCRIM ADHESIVE: **K.REND** HP12 Base Coat.
- WBS DASH RECEIVER WHITE: **K.REND** Silicone Dash (White)
- WBS Dashing Aggregates **DERBYSHIRE** AGGREGATES.
- SEALANT: **ROSTIK** EVO-STIK Building Silicone Sealant.

3. Proprietary system fixings:

RagRail R-CCP-4550 hardened screws for STF supporting walls 4.5x50mm. Threaded OSB/Chipboard screw with optimised head geometry with underhead cutting ribs and double cone head. Recess: P22, Min. installation depth 18mm, Min. substrate thickness 35mm, Min. spacing 30mm, Min. edge distance 30mm.

RagRail R-CCP-5100 hardened screws for STF supporting walls 5.0x100mm. Threaded OSB/Chipboard screw with optimised head geometry with underhead cutting ribs and double cone head. Recess: P22, Min. installation depth 20mm, Min. substrate thickness 40mm, Min. spacing 30mm, Min. edge distance 30mm.

EJOI TKR case-hardened, carbon steel, self-tapping screw with Bravoll TIT washers, 4.8x110mm, 60mm washer/anchor. Anchor: BRAVOLL TIT 60/5-20, Washer diameter: 60 mm, Minimum embedment norm: 20 - 40 mm, Anchor body material: shock-resistant polypropylene, Approval: 090-006720 T2U9 Czech Republic. Screw material: Case-hardened steel, Chromad-coated – high-quality coating to improve corrosion protection (15 Keesternich cycles, DIN 50018, 1997), bugle head. Diameter: 4.8 mm, Drilling capacity: 1.5 mm, Drive: Cross recess PH 2. Pre-assembled screw, high load-bearing capacities. Minimum spacing: 100mm, Minimum edge distance: 100mm.

EJOI TKR ZT6 case-hardened, carbon steel, self-tapping screw with Bravoll TIT washers, 5.5x140mm, 60mm washer. Anchor: BRAVOLL TIT 60/5-20, Washer diameter: 60 mm, Minimum embedment norm: 20 - 40 mm, Anchor body material: shock-resistant polypropylene, Approval: 090-006720 T2U9 Czech Republic. Screw material: Case-hardened steel, Chromad-coated – high-quality coating to improve corrosion protection (15 Keesternich cycles, DIN 50018, 1997), bugle head. Diameter: 5.5 mm, Drilling capacity: 6 mm, Drive: Hexalobular drive T30. Pre-assembled screw, high load-bearing capacities. Minimum spacing: 100mm, Minimum edge distance: 100mm.

Fix insulation boards as per Manufacturer's recommendation. Fit tightly board edges together.

4 TRIMS, BEADS as per specification

- TRUELINE** metal stop beads.
- TRUELINE** Belcast drip beads.
- TRUELINE** Movement beads.
- TRUELINE** base beads.
- TRUELINE** stop beads
- TRUELINE** Corner beads
- TRUELINE** Oversills
- TRUELINE** Trims & flashings

Fix beads and trims at all joints, junctions and perimeters, straight and with a constant projection.

5. Refix retained services and fittings as per drawings and specification, use EWI proprietary fixing:

SWIFIX SWI-ST tube/spacer

SWIFIX SWI-TT tap fixing tube with expanded collar

SWIFIX SWI dish pad mounting plate with 4 point fixing sleeves EJOI TORX T40 FID